


WE ARE HONORED TO WELCOME YOU TO THE OPEN HOUSE OF OUR NEW 24/7 SHELTER.  
COME SEE THE IMPACT OF YOUR GENEROSITY, TOUR THE NEW SPACE, AND SEE HOW WE  
CAN NOW SERVE EVEN MORE FAMILIES WITH SAFETY, DIGNITY, AND SUPPORT.

Lunch will be served while supplies last.

 FRIDAY, JUNE 26, 2026

 NOON TO 4 PM

 NEW PATHWAYS SHELTER  
1615 GARLAND ST S  
CAMBRIDGE, MN 55008



NEW PATHWAYS  
SHELTER & SUPPORT

YOUR SUPPORT BUILT THIS. YOUR COMPASSION FILLS IT. WE HOPE YOU CAN JOIN US!

# SPRING US FORWARD MATCHING GIFT CHALLENGE

EVERY DOLLAR YOU GIVE IS DOUBLED.  
EVERY CHILD HELPED, TWICE AS FAST.

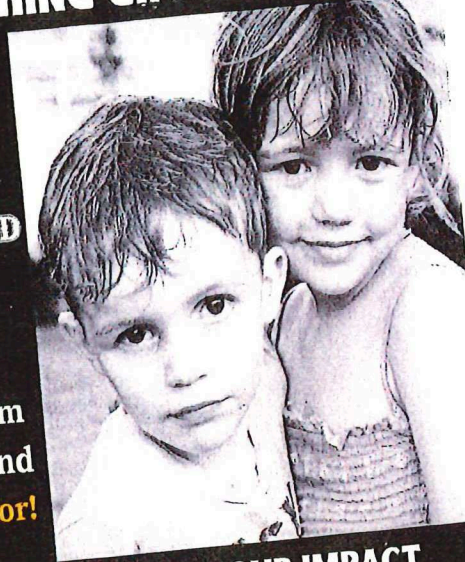
YOUR DONATION WILL BE MATCHED  
DOLLAR FOR DOLLAR UP TO

**\$10,000**

Thanks to generous donations from  
**Shalom Thrift Store** and  
an **ANONYMOUS** donor!



NEW PATHWAYS  
SHELTER & SUPPORT



DOUBLE YOUR IMPACT  
DURING THE MONTH OF JUNE!



NEW PATHWAYS  
SHELTER & SUPPORT

Three Ways to Give



PO Box 366  
Cambridge, MN  
55008

SCAN ME



Online

<https://bit.ly/NPI-Match2026>

USA/POSTCARD

RECEIVED



OAK

JUN - 1 2026

SANBURY COUNTY  
HEALTH AND HUMAN SERVICES

Penny Messer  
1700 E Rum River Dr S Ste A  
Cambridge, MN 55008-2547

www

05/26

